

Autosaver

User Guide

1. To install the aw\_Autosaver script simply put the script file [aw\\_Autosaver.jsxbin](#) into the folder.

On Windows:

Program Files/Adobe/(After\_Effects\_version)/Support Files/Script/Script UI Panels/

On Mac Os:

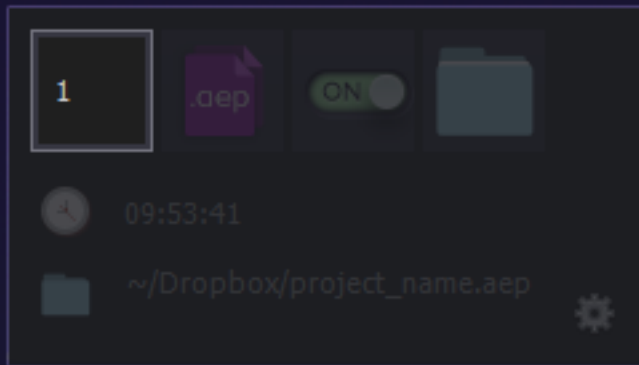
Applications/(After\_Effects\_version)/Scripts/Script UI Panels/

2. Also, under After Effects preferences you need to enable the checkbox **«Allow Script to Write Files and Access Network»** . You can find it under «General» tab of After Effects «Preferences».

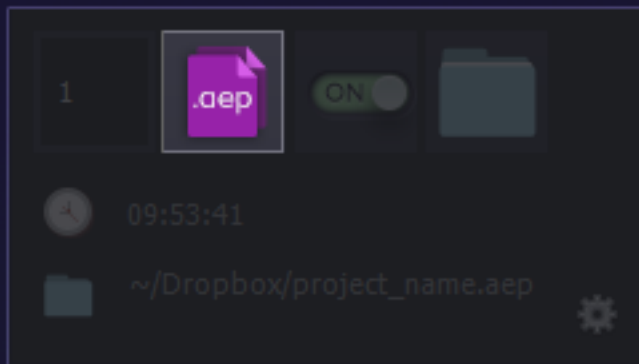
**«Edit -> Preferences -> General»**

You can also find the tutorial on how to install scripts here:

<https://vimeo.com/1702504>



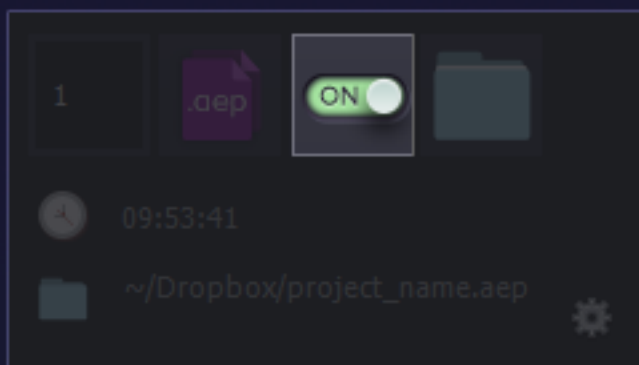
- 1 Time interval in minutes.  
How often to save a project and copy.



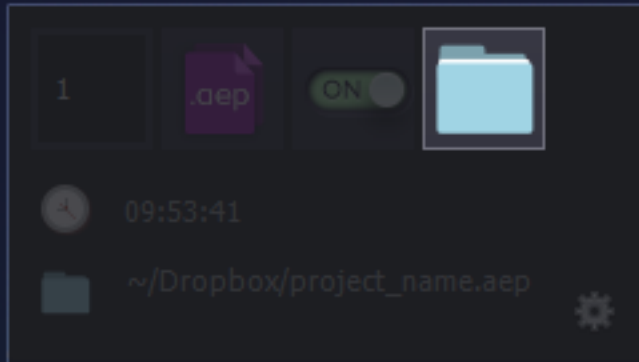
- 2 On click will Save project and it`s copy.

**shift** + Click will save copy only.

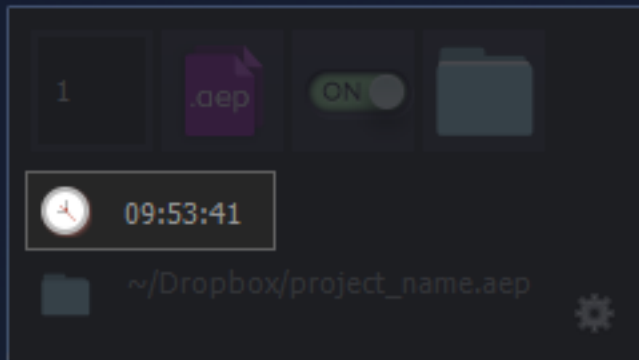
**alt** + Click to add a comment to current project version



- 3 Turn Off/On autosave function

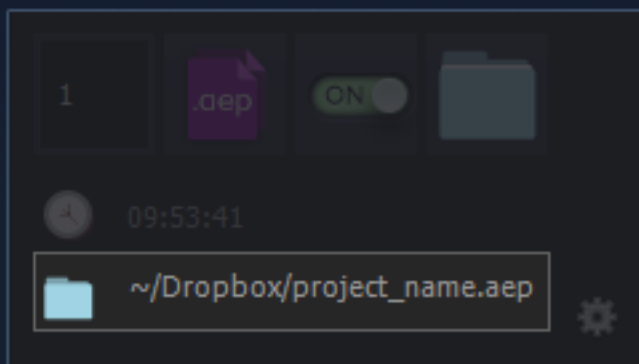


4 Choose path where project`s copy will be saved.



5 When your last project saved.

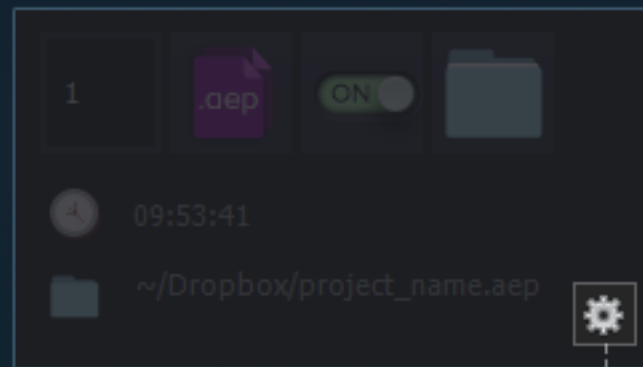
Hover on watch to see how much versions of current project saved.  
Click on watch to open folder with project versions.



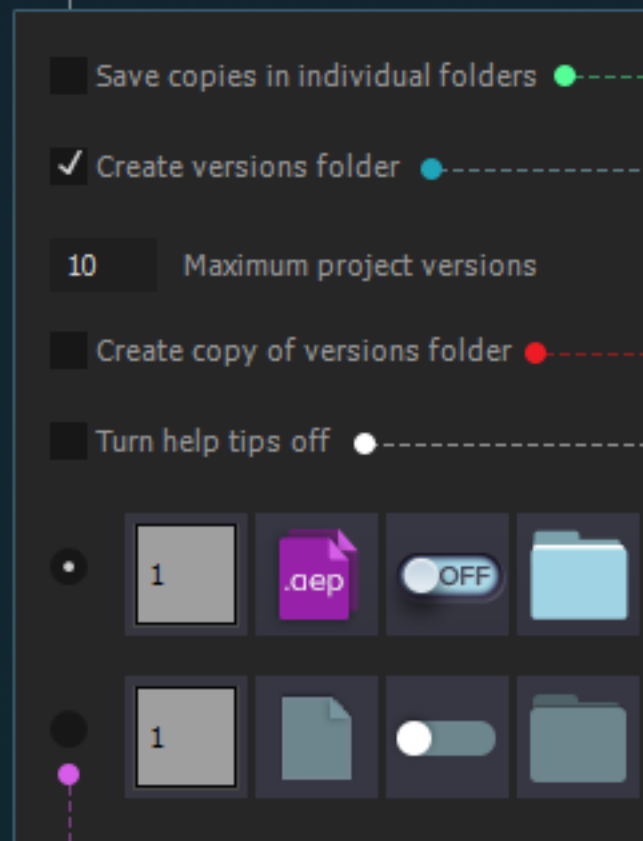
6 Where your last project saved.

Click to open folder with your project.

**shift** + Click to open folder with project`s copy.



## 7 Settings button



- Save all copies in individual folder like this:

*~Dropbox/projectname/projectname.aep*

- Create versions folder in the same path with project.
- Copy versions folder to the to choosen folder (same as your copy`s path).
- Off/On help tips for main UI
- Switch between UI



aw\_Autosaver changelog:

- 2.0 November 2015 initial release