

Dragon Quick Start

Author: BelaDaddy
Copyright © 2007-2013 BelaDaddy Software.
All rights reserved.
Homepage: www.beladaddy.com

License:

This software is provided 'as-is', without any express or implied warranty. In no event will the author be held liable for any damages arising from the use of this software.

While Dragon is tested to the best of the developer's ability, no warranty or guarantee is offered to the end user.

No suggestions made by the developer or his representatives are to be taken as an implied warranty or guarantee.

Dragon may only be distributed by the official website (www.beladaddy.com), or by parties explicitly given permission by the developer.

This software tool is to be distributed only in this original form as intended by the developer.

Dragon is shareware and burning files and folders to CD or DVD disc with the unregistered version is limited to 300MB. Should you wish to help support continued development of this software tool, then please register the program.

Contact Information:

You can always find the latest version of this application at:
www.beladaddy.com

If you experience any problems, or have feature suggestions, feel free to E-mail the author at:
support@beladaddy.com

Table of contents:

What can I do with Dragon?	4
System requirements. Installing Dragon	4
Launching Dragon	5
Setting up program properties	6
Building ISO image file	7
Burning ISO image file to optical disc	8
Burning data files to optical disc	9
Erasing optical disc	10
Shortcuts	11

What can I do with Dragon?

"Dragon" is an ideal solution to burn folders and different kind of data and audio files to CD or DVD disc.

System requirements

Below you will find the minimum requirements for running Dragon:

Windows

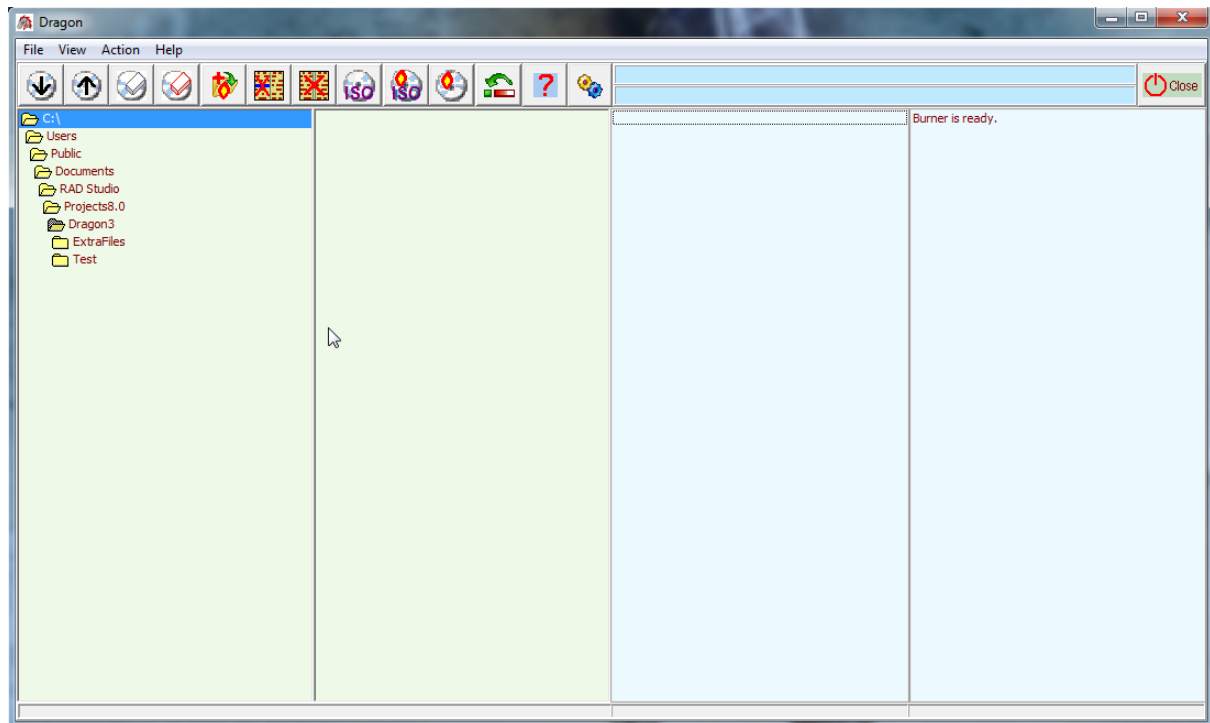
- Intel Pentium 3 or better. 1GHz or faster.
- 1 GB RAM (WindowsXP). 4 GB RAM recommended (Vista or higher).
- 2 GB free hard disc space.
- 32 or 64 bit Windows.
- Windows 2000, XP, Vista, Windows7 or Windows8.

Installing Dragon

1. Download the "Dragon" installation file.
2. Uninstall the old version.
3. Double click the downloaded file named "Dragon".
4. Follow the instructions on the screen.
5. Select "Overwrite" if asked.
6. Restart your computer.

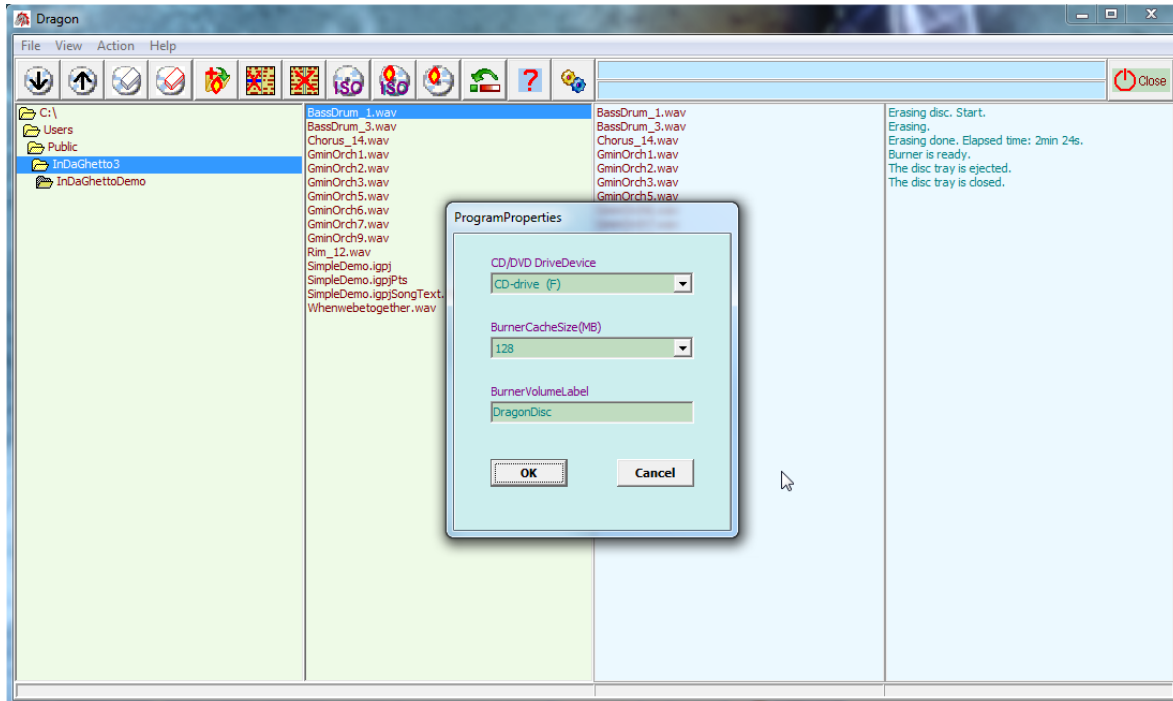
Launching Dragon

Launch the program by double clicking the Dragon icon or by selecting the Dragon item from the Start menu.



Setting up program properties

After launching “Dragon”, for the first time you should choose the properties for the program. To choose or change properties click the “Properties” button or select menu item “View - Properties”.



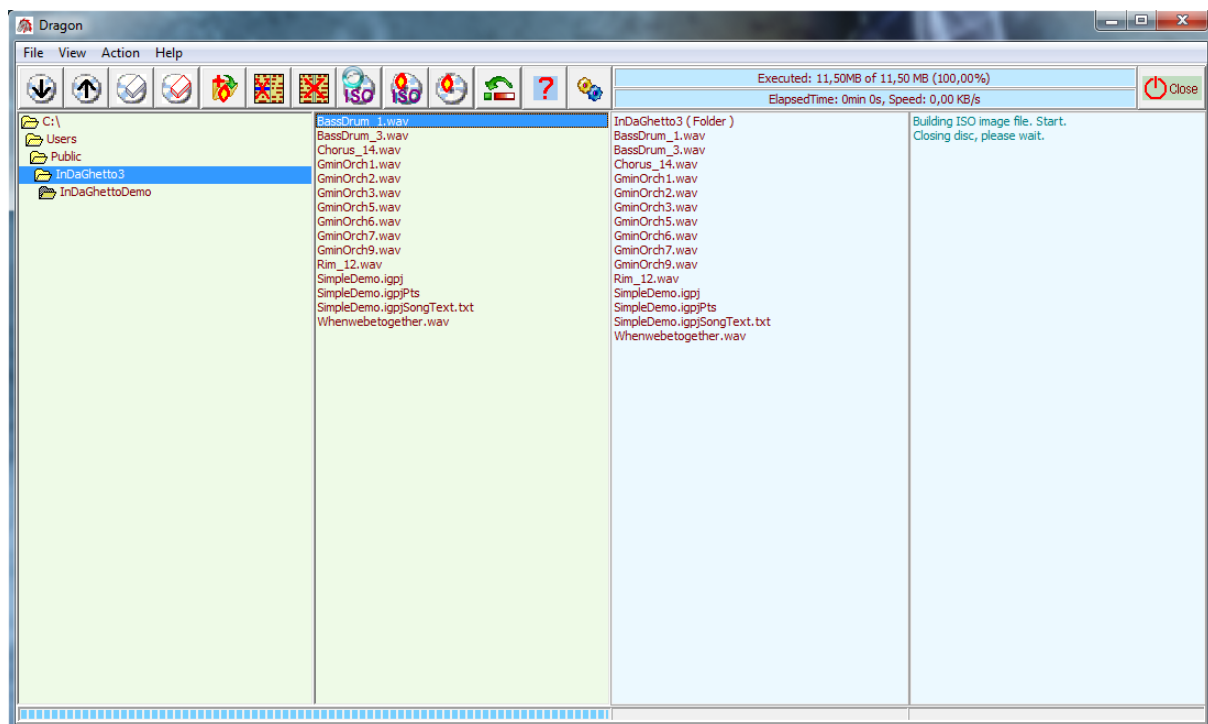
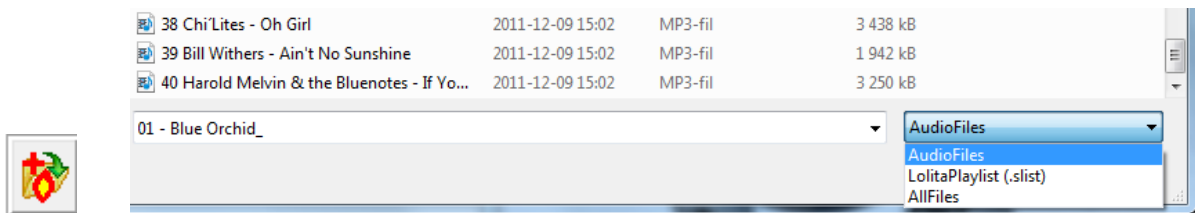
Program properties

The “CD/DVD DriveDevice” chosen here will be used to burn data to CD or DVD disc with Dragon.

The “BurnerCacheSize” chosen here will be used to temporarily store data in the memory when burning data to writable CD or DVD-disc with Dragon.

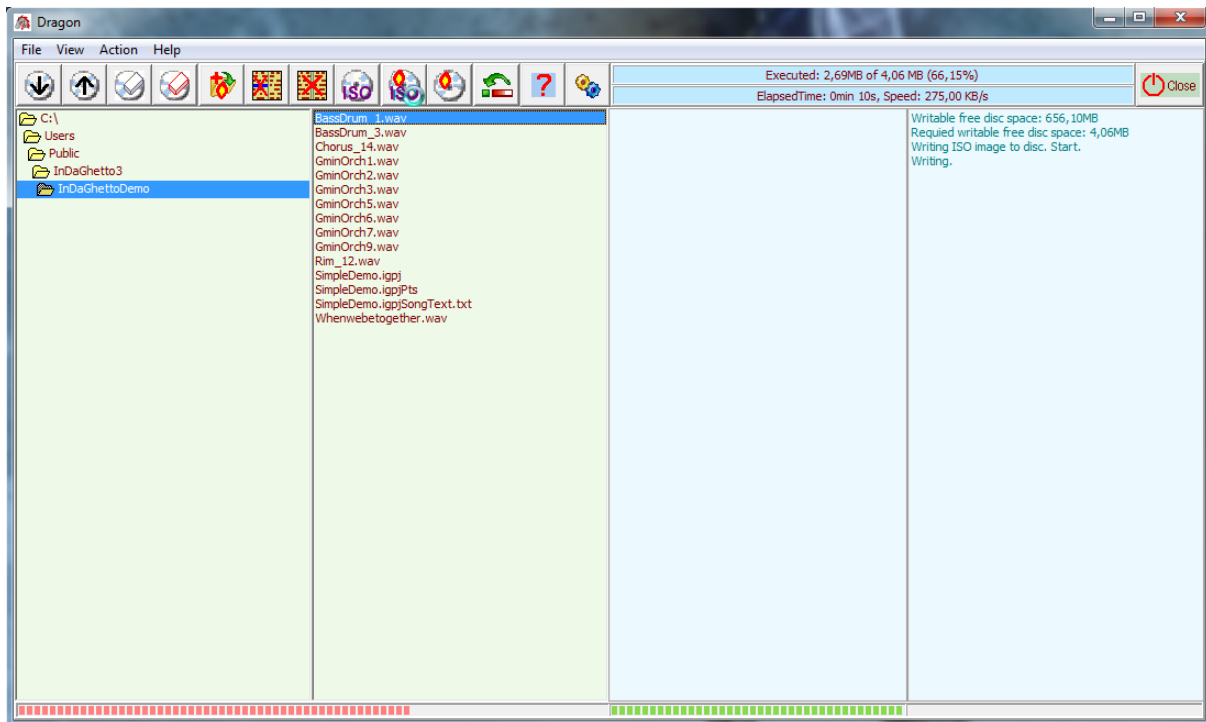
Building ISO image file

To add folders to the “BurnerFileList” select the folder in the “FolderList” and drag and drop the folder to the “BurnerFileList”. To add files to the “BurnerFileList” select the files in the “FileList” and drag and drop the files to the “BurnerFile List”. It is also possible to add files to the “BurnerFileList” by click the “AddFiles to BurnList” button or select menu item “File – AddFiles to BurnList” and open the files in the “BurnerFileList”. To add audio files to the “BurnerFileList” from a Lolita playlist simply open the playlist with the “AddFiles to BurnList” button. To build the ISO image file click the “BuildISOimageFile” button or select menu item “Action – BuildISOImageFile”, name the ISO file and click “Save” in the save dialog box.



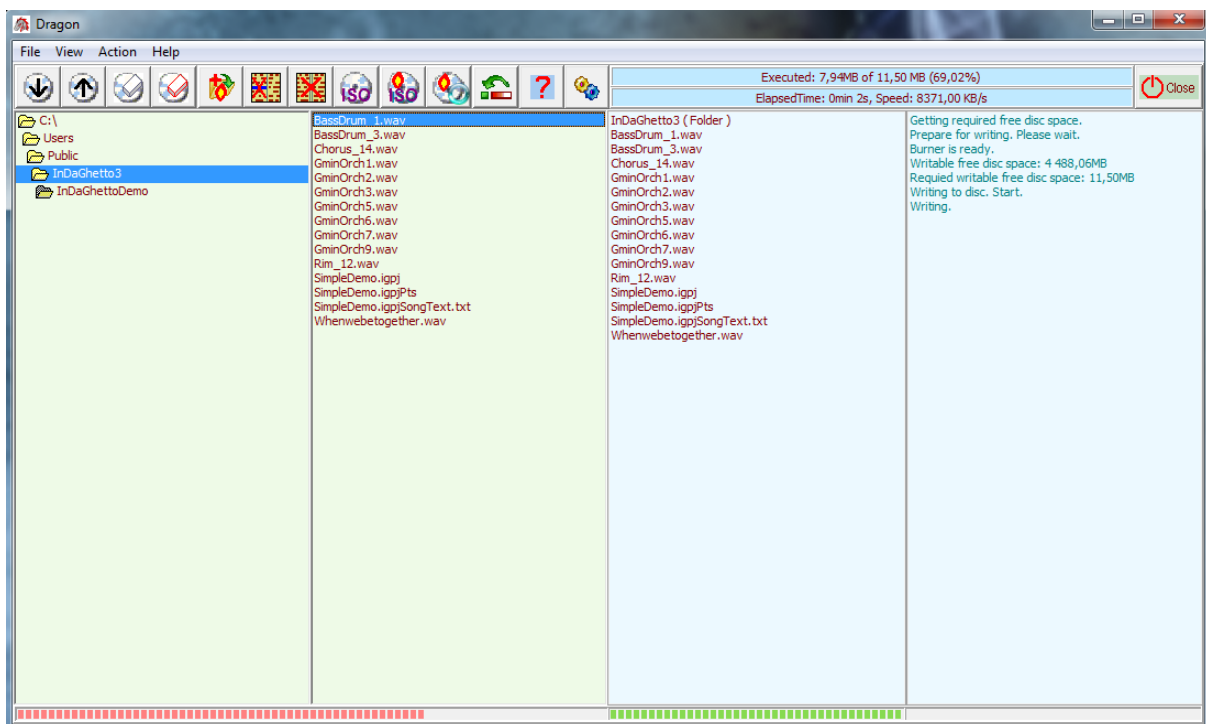
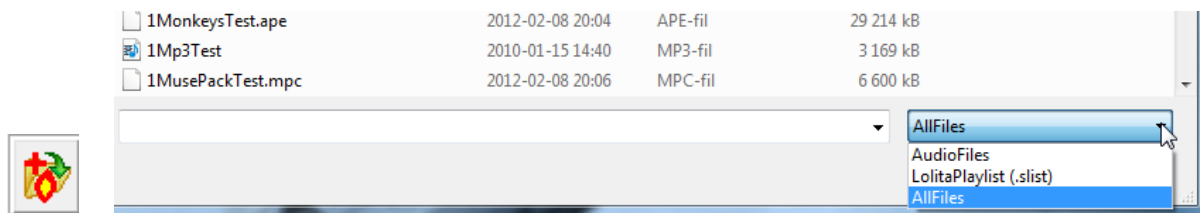
Burning ISO image file to optical disc

To burn ISO image file to disc insert a writable optical disc and click the “BurnISOImage to Disc” button or select menu item “Action – BurnISOImage to Disc” and open the ISO file.



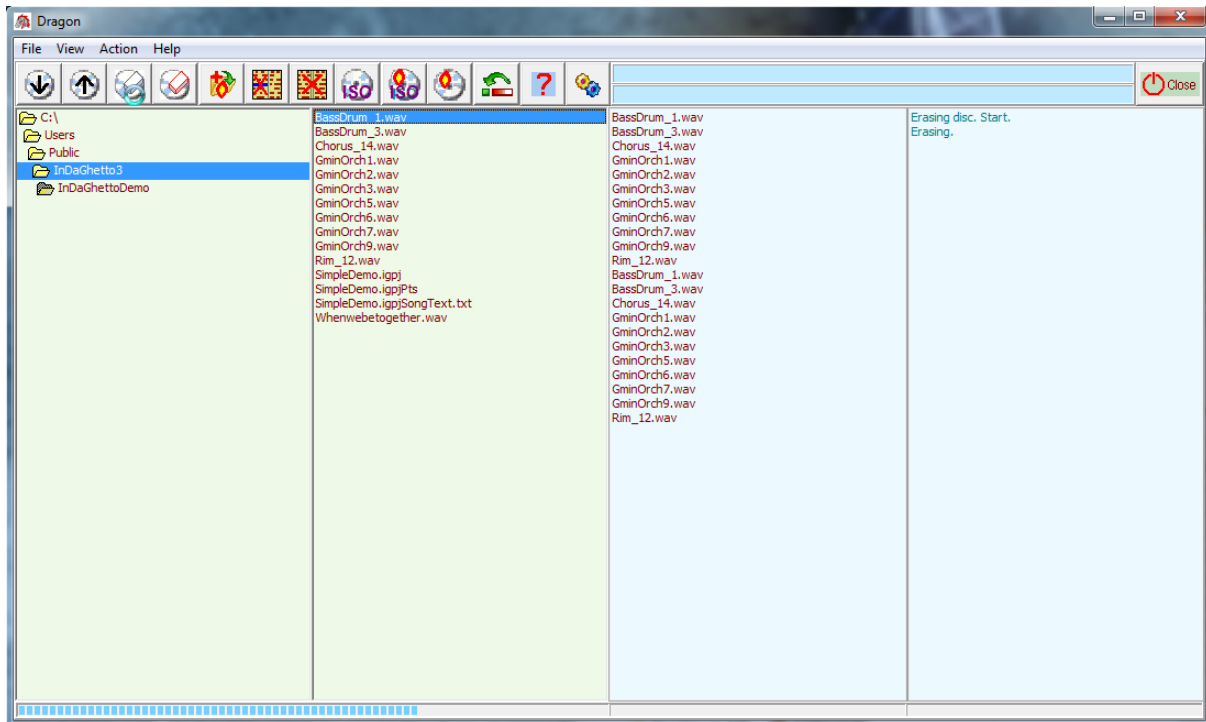
Burning data files to optical disc

To add folders to the “BurnerFileList” select the folder in the “FolderList” and drag and drop the folder to the “BurnerFileList”. To add files to the “BurnerFileList” select the files in the “FileList” and drag and drop the files to the “BurnerFile List”. It is also possible to add files to the “BurnerFileList” by click the “AddFiles to BurnList” button or select menu item “File – AddFiles to BurnList” and open the files in the “BurnerFileList”. To add audio files to the “BurnerFileList” from a Lolita playlist simply open the playlist with the “AddFiles to BurnList” button. To burn the added files to disc insert a writable optical disc and click the “BurnFiles to Disc” button or select menu item “Action - BurnFiles to Disc”.



Erasing optical disc

To erase an erasable disc insert the disc and click the “QuickEraseDisc” or the “FullEraseDisc” button or select menu item “Action – QuickEraseDisc”.



Shortcuts

Ctrl + Q:

CloseProgram

Key Delete:

Close selected items from the
BurnerFileList

Arrow up/down, Arrow right/left:

Move selection to next row

F1:

Open help file

Ctrl + W:

Open home page

Ctrl + R:

Open the how to register page.

Ctrl + D:

Open the download page

Close button click

Check drive status