

Aqua Kitty – Milk Mine Defender Game Manual

INSTALLATION

Please double click the game executable to install, and follow the on-screen instructions. The game can be un-installed from either the start menu, or from the Windows control panel.

Once installed, simply click the game icon in the start menu, or the game icon on your desktop, to load the game.

AQUA KITTY MENUS

Main Menu:

Here you can choose to go to the Map Screen, adjust settings, reset your save game or quit.

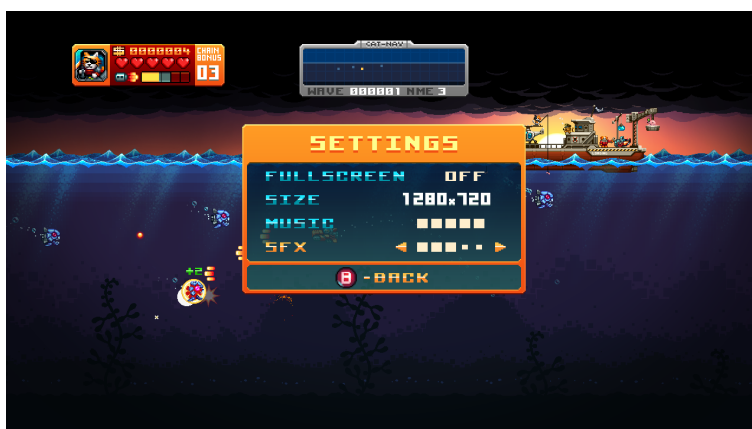


Settings Menu:

This can be accessed from either the Main Menu or in-game when paused.

Within the settings you can toggle fullscreen on/off. You can also switch resolution from 3 possible presets if in windowed mode (if fullscreen, the game auto changes to the highest possible resolution available).

The music and sound effects have volume sliders you can adjust too.



PLEASE NOTE – some pc graphics drivers give you additional settings that control how a game looks when running fullscreen. You may need to adjust these if the game looks strange when

fullscreen.

For example Nvidia has an "Adjust desktop Size and Position" menu which lets you choose between Aspect ratio, Full screen and No scaling.

Choosing Aspect ratio would be the ideal setting, as it would make the game fill your screen but also maintain correct proportions.

Map Screen:

The map screen lets you select which levels to play. As you complete each level, new ones are unlocked. Simply move the boat cursor over an unlocked level and press fire to play it. Game difficulty can be changed on this screen too, simply press Y (Xbox360 pad button or Y on the keyboard) to toggle the difficulty from NORMAL to EASY.

If you are using a different type of controller, use the equivalent to the Xbox Y button.

Levels unlocked in Easy are not unlocked in Normal – they are separate campaigns.



Reset Game Save:

If you wish you can reset your game save here, doing this will reset all game progress.

PLAYING AQUA KITTY

Controls:

The game can be played with an Xbox360 controller, pc keyboard or other types of controllers. At anytime in the game you can press F10 on the keyboard to see keyboard controls, or press BACK on a controller to see joypad controls.



Protect the Milk Miners:

Milk miner kittens patrol the sea in front of large milkpumps and can be seen on the radar

screen (the Cat-nav) as small dots. Red robo Jellyfish show as red dots on the radar and will try to steal the kittens.

The number of miners varies from level to level, but you only need to keep at least one safe to complete a level.

It is far better however to save all miners if possible as each gives a bonus score on level completion.



Scoring and chaining:

Most enemies are worth 1 score point. If you destroy enemies in a row you increase a chain-kill counter. This counter multiplies the score of whichever enemy you just killed, so the higher you can keep the chain counter the better.

Also be on the lookout for certain enemies which are worth more than 1 point, applying a high chain multiplier to these will rapidly boost your score.

Note that the higher the chain number goes, the less time you have between kills to successfully trigger a chain count increase. So reaching very high chains requires both skill and tactics.

Turbo fire upgrades:

Each time you complete the last level in an area on the map, your turbo fire gun energy is increased by one unit.

If you find you can't rescue all miners on a certain level now, don't worry and just save as many as you can to complete the level – then come back to it later once your gun energy is higher.

Your secondary weapon can be the key to completing some levels, use it wisely!

Goldfish and pickups:

Pickups come from special golden fish which dart about the levels. Watch their eye colour carefully, as it determines which bubble pickup type it will drop when destroyed.

These pickups do not expire until the level ends, meaning you can be strategic about WHERE you want them to spawn, WHICH type is spawned, and WHEN you want to activate them.



Enemies start off in the game quite simple, but as you progress you will come across new ones with different behaviours, strengths and weaknesses.

HAVING PROBLEMS RUNNING THE GAME?

A very small number of people have encountered a problem loading the game related to DirectInput and SlimDX. If this happens to you, there is a command line you can add to the game icon which should fix your issue but will limit you to Xbox360 controller support and keyboard controls only.

WARNING – PLEASE ONLY ATTEMPT THIS IF YOU KNOW WHAT YOU ARE DOING.

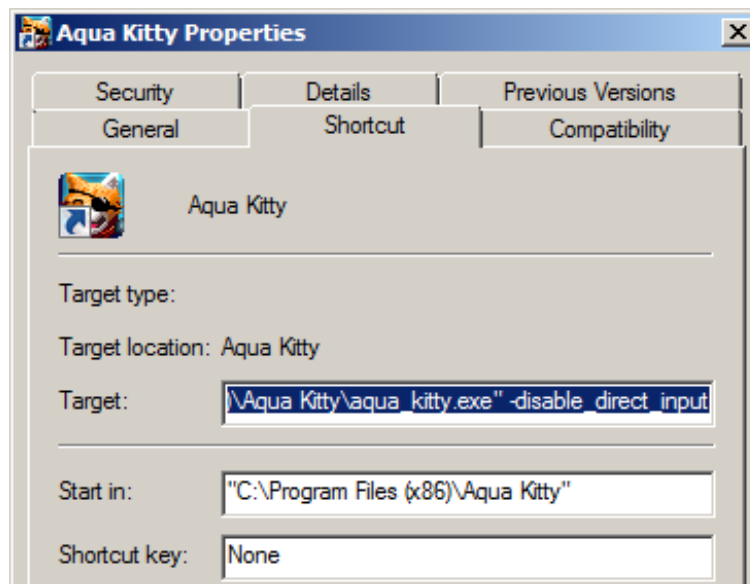
1. Right click the game icon, select PROPERTIES.
2. Then click the SHORCUT tab on the properties panel.
3. In the `TARGET:` slot, add the following text after the existing path text with a space before it:
-disable_direct_input

for example this:

"C:\Program Files (x86)\Aqua Kitty\aquakitty.exe"

would become:

"C:\Program Files (x86)\Aqua Kitty\aquakitty.exe" -disable_direct_input



Then click Apply, click OK to close the properties panel. Then run the game.

If you have any issues with running the game, please mention them in the forum of the website you bought the game from, or get in touch with us via the games website - <http://tikipod.com/aquakitty/> .