

TDS510USB JTAG Emulator Installation Guide

V2.0

**Wintech Digital Systems Technology Corp.
24 Corporate Plaza, Suite 100
New Port Beach, CA 92660,
USA
Phone: (001) 949-760-0401
Fax: (001)949-203-2235
Email: info@wintechdigital.com**

IMPORTANT INFORMATION

About This Installation Guide

This Installation Guide is for the TDS510USB JTAG Emulator product. The TDS510USB JTAG Emulator is a module to be attached to a PC for hardware engineers and software programmers to develop DSP applications.

The text paragraphs in this Guide are very important for proper device functioning and for preventing any possible damages on the Wintech TDS510USB JTAG Emulator device and project target board. These paragraphs are shaded as in the following example. Please carefully read each of the shaded text.

This is an example of a very important text paragraph mentioned above.

Related Documents for your reference:

Code Composer User's Guide (Texas Instruments SPRU296 - Updated: 12/30/1998)

Code Composer Studio User's Guide (Texas Instruments SPRU328B - Updated: 03/28/2000)

TABLE OF CONTENTS

Introduction	3
Overview.....	3
Features.....	3
QUICK Installation	4
Quick Install Procedures.....	4
The TDS510USB JTAG Emulator kit contains:.....	4
Installation Requirements	4
Supported Operating Systems.....	4
Detailed Installation	5
What you will need	5
The Hardware Installation.....	5
The USB Device Drivers Installation	6
A. Driver installation for Windows 2000/XP:	6
B. Driver installation for Win98/ME:	9
Installing the TDS510USB Software.....	12
Code Composer Studio Setup(CCS C6000)	12
Hardware Considerations	17
Recommended Connection Procedure.....	17
Recommend Disconnection Procedure.....	18
JTAG Cable Connection	18
XDSRESET and XDSPROBE	19
XDSRESET	19
XDSPROBE.....	19

Introduction

Overview

Wintech TDS510USB JTAG Emulator is designed to use with digital signal processors (DSPs) operating at 1.0-5.0 volts. The emulator itself is a bus-powered USB device. It is fully plug and play compatible and is fully powered by the host computer's USB connection. The TDS510USB JTAG Emulator operates with TI Code Composer Studio IDE debug tool and is fully compatible with Windows 98/SE/ME/2000/XP.

Features

Wintech TDS510USB JTAG Emulator has the following features:

- Supports Texas Instruments DSP with a JTAG (IEEE 1149.1) interface: C240X, F28X, VC33, C5000, C6000, TMS470 (ARM) and OMAP platforms.
- Supports Texas Instruments Code Composer Studio.
- Supports 1.0-5.0 volt DSP devices.
- USB compatible. Simple Connection, fully Plug-and-Play compatible – no jumpers, no switch settings.
- Hot pluggable
- Power provided by the USB bus, no additional power supply is required.

QUICK Installation

Quick Install Procedures

This guide describes the steps to installing the TDS510USB JTAG Emulator in the following order:

1. Install the TDS510USB JTAG Emulator hardware
2. Install the TDS510USB JTAG device driver
3. Make sure Code Composer Studio IDE is installed on the PC
4. Install the TDS510USB JTAG Emulator software
5. Configure Code Composer Studio IDE
6. Reset the TDS510USB JTAG Emulator and Reset the target DSP
7. Run CCS

The TDS510USB JTAG Emulator kit contains:

- TDS510USB JTAG Emulator
- USB interface cable
- The TDS510USB driver disk.
- TDS510SB2.0 JTAG Emulator Installation Guide Reference Guide (this document)

Installation Requirements

- Code Composer Studio IDE 1.2 or greater
- A free USB port
- 233MHz or higher Pentium compatible CPU (500MHz or higher Pentium III CPU or equivalent is recommended)
- Local CD-ROM drive

Supported Operating Systems

- Windows 98/ME/2000/XP

Detailed Installation

What you will need

The following detailed list contains all items needed to install and run with the TDS510USB JTAG Emulator.

- PC with a free Universal Serial Bus (USB) port.
- Wintech TDS510USB JTAG Emulator
- Wintech TDS510USB driver disk.
- USB interface cable.
- DSP target system
- Code Composer Studio

The Hardware Installation

- Remove power from the target DSP system.
- Connect the keyed TDS510USB JTAG Emulator JTAG interface cable to the target board.
- Apply power to the target DSP system.
- Connect the TDS510USB JTAG Emulator to the host computer system using a USB cable.

WARNING

Be sure to connect interface cables with the correct orientation. Pin 1 on the interface cable should match Pin 1 on the DSP system connector. The Wintech TDS510USB 2.0 JTAG Emulator features a "keyed" connector to minimize your chance of error. Do not force cables into position. Forcing them may cause damages on the cables or the interconnected boards and systems.

The USB Device Drivers Installation

A. Driver installation for Windows 2000/XP:

1. After plug the TDS510USB JTAG Emulator into the host computer's USB port, the system should display the *Found New Hardware* (Figure A-1) dialog box. This dialog box indicates the computer operating system has found a new USB device.



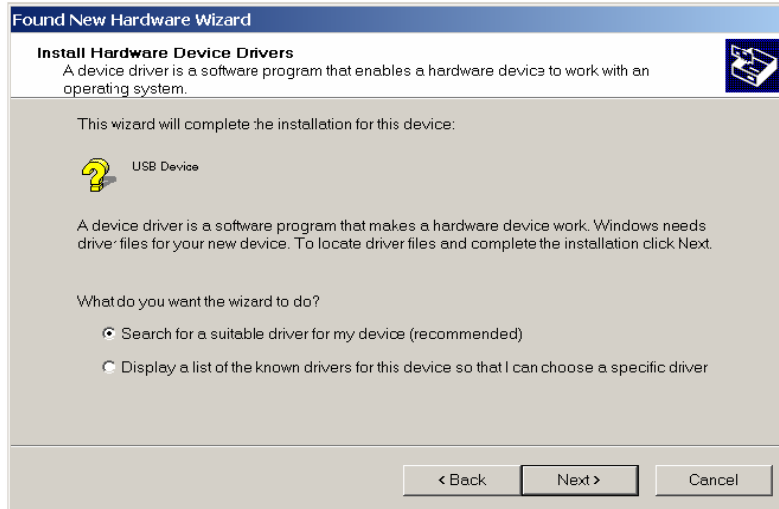
Figure A-1

2. The system will prompt for new hardware detected and start the “Found New Hardware Wizard” as shown in Figure A-2.

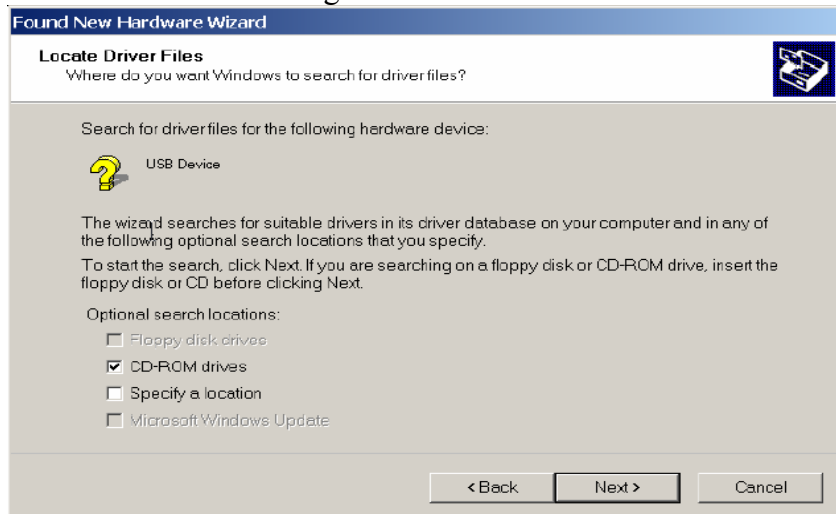


Figure A-2

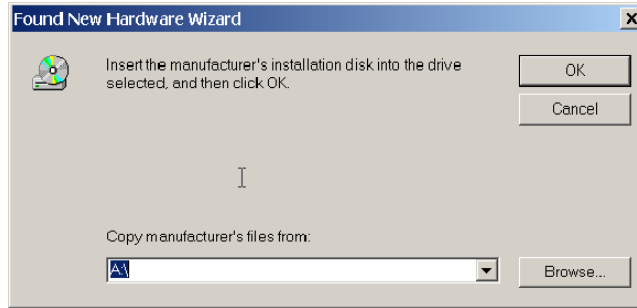
3. Click on Next and system will display the window as shown in Figure A-3.

**Figure A-3**

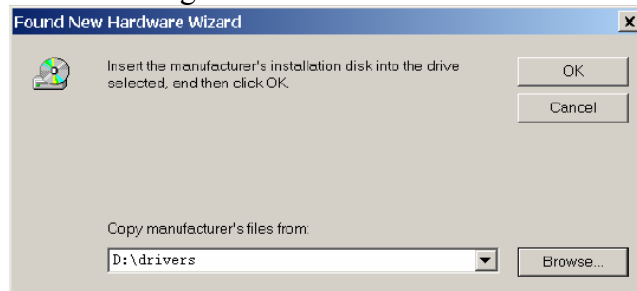
4. Check on “Search for a suitable driver for my device (Recommended)” and click on Next. The system will display a window as shown in Figure A-4.

**Figure A-4**

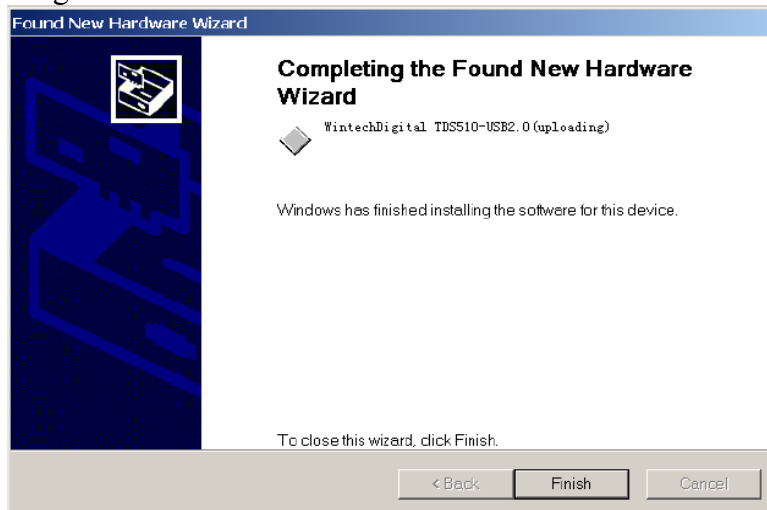
5. Check on “CD-ROM drives” and click on Next. The system will prompt you to insert the manufacturer’s installation disk, as shown in the Figure A-5.

**Figure A-5**

- Click on Browse and locate the file WTUSB510.INF in the installation CD, or in the folder where you have download the file into, as shown in Figure A-6.

**Figure A-6**

- Click on Next, the following window will be displayed, as shown in Figure A-7.

**Figure A-7**

- Click on Finish. Setup is completed.

B. Driver installation for Win98/ME:

1. After plug the TDS510USB JTAG Emulator into the host computer's USB port, the system should display the *Found New Hardware* (Figure B-1) dialog box. This dialog box indicates that the computer operating system has found a new USB device.

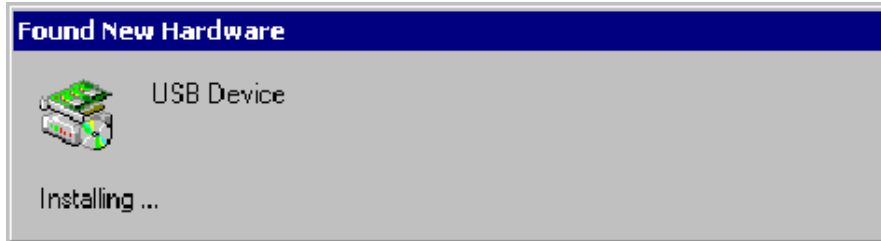


Figure B-1

2. The system should detect the new hardware and start the “Add New Hardware Wizard”, as shown in Figure B-2.



Figure B-2

3. Click on Next to go to the next window, as shown in Figure B-3.

**Figure B-3**

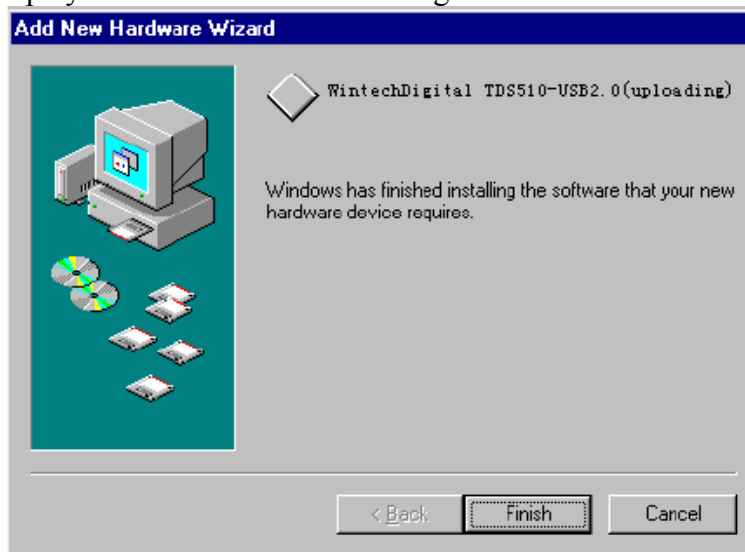
4. Click on Next to go to the next window, as shown in Figure B-4.

**Figure B-4**

5. Click on OK and the wizard will display the driver to be installed, as shown in Figure B-5.

**Figure B-5**

6. Click on Next and the wizard will complete the driver installation and display the window as shown in Figure B-6.

**Figure B-6**

7. Click on Finish. Setup is completed

Installing the TDS510USB Software

This installation assumes that the Code Composer Studio IDE has already been installed on the PC. If not, please follow the directions for installing Code Composer Studio first. After completing the installation procedure, you may return to this guide to complete the installation procedure of the TDS560 Emulator.

Insert the TDS510USB20 driver disk into your CDROM, Double click on **setup.exe** to install the JTAG emulator tools for CCS.

NOTE

Be sure the Code Composer Studio has been installed before run setup.exe. It'll copy files to the CCS install directory and create environment variable to enable the file usage by CCS. If this step is missing, the TDS510USB2.0 can't function properly.

Code Composer Studio Setup(CCS C6000)

1. Click on “Start” button → Program → Texas Instrument → Code Composer Studio 6000 → Setup CCS 2 (C6000) , Code Composer Studio Setup window will appear.
2. The Import Configuration dialog box may start when the setup application starts. If it does not start, you may manually start it by selecting File → Import..., click the button labeled Clear to remove any previously defined configuration, and then, in the message box, click Yes to confirm the Clear command.
3. In the Available Configuration List in the Import Configuration Dialog, select the desired **TDS510USB emulator** configuration. Use Filters to help narrow the available choices. If the proper **TDS510USB emulator** configuration is located, then click Import and proceed to Step 9(see Figure C-1).
4. If the desired **TDS510USB emulator** configuration was not found in the Available Configuration List, close the Import Configuration dialog and Double click on C6000 XDS (Texas Instrument) on

the middle column (see Figure C-2), the “Board Properties” window will pop-up.

Note:

- Double click on *C54X XDS (Texas Instrument)* or *C55X XDS (Texas Instrument)* if your target CPU is C5000.
- If your target CPU is F240X, you need to click on ***Install a Device Driver*** on the right column to install *tds5102xx.dvr*.
- If your target CPU is VC3X, you need to click on ***Install a Device Driver*** on the right column to install *tds510vc3x.dvr*.

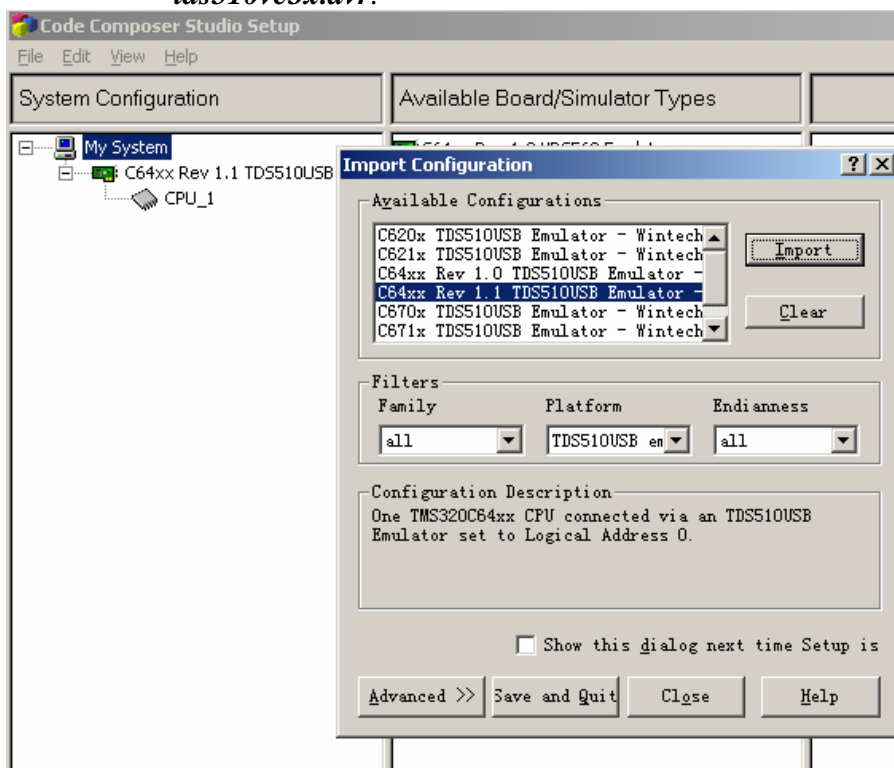


Figure C-1

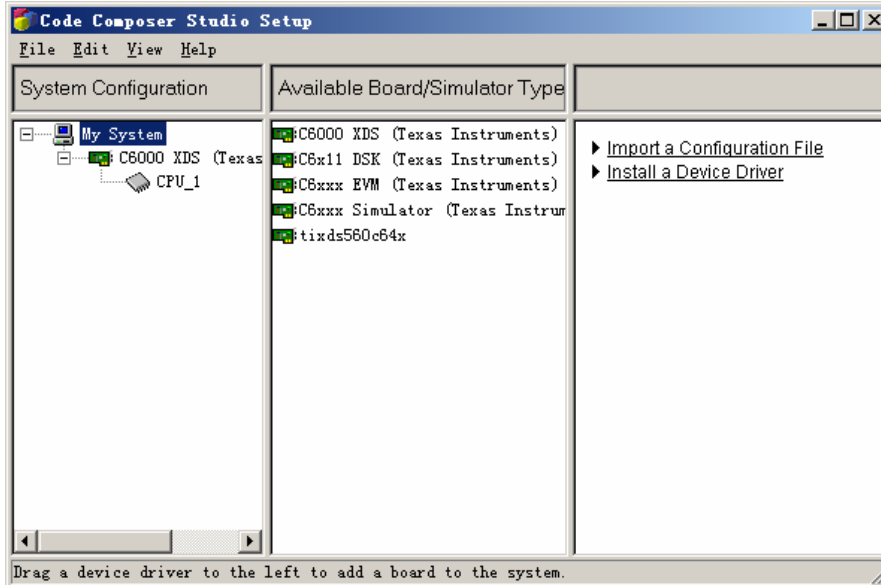


Figure C-2

5. On the “Board Properties” Window, click on “Auto-generate board data file” and change it to “Auto-generate board file with extra configuration file” (see Figure C-3). Then Click on “Browse” to find the CCS folder (the default path is C:\ti\cc\bin) , choose WTUSB5102.CFG and click on “Open”.

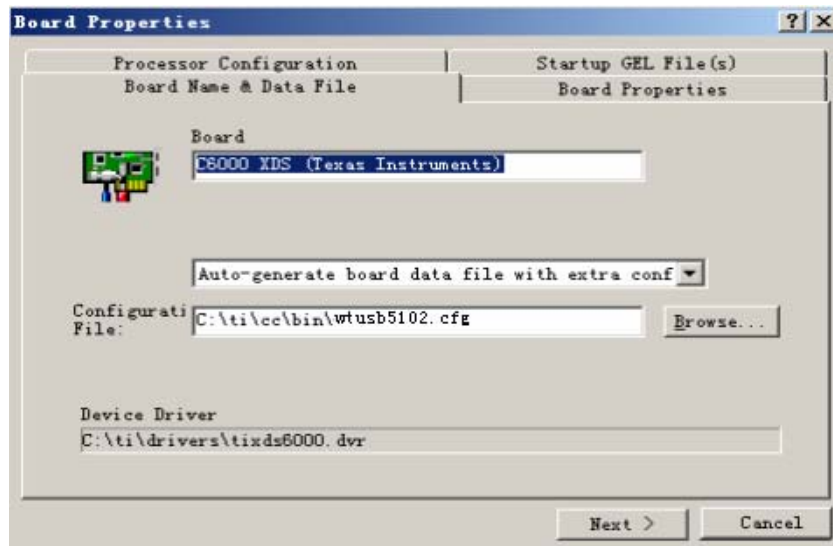


Figure C-3

6. Click on “Next”, you will see the I/O Port Value: 0x240 (see Figure C-4).

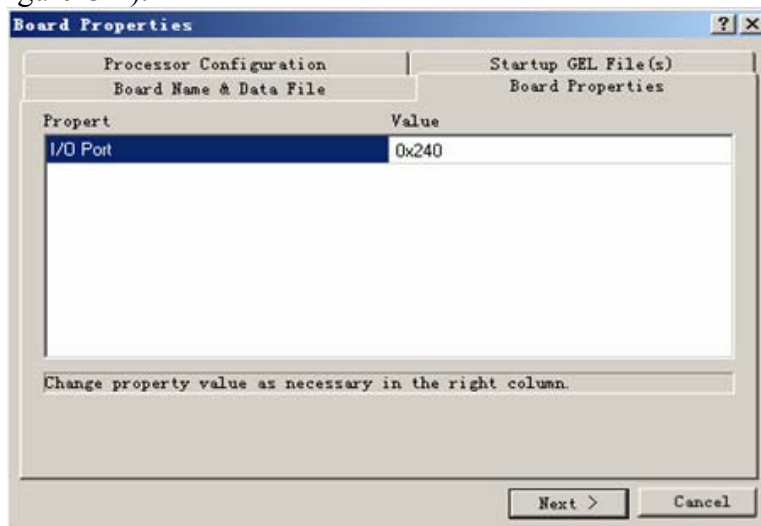


Figure C-4

7. Click on “Next” to get to the Process Configuration page. Depending on the type and number of the target boards you have, choose the appropriate processor and click on “Add Single” or “Add Multiple” (see Figure C-5).

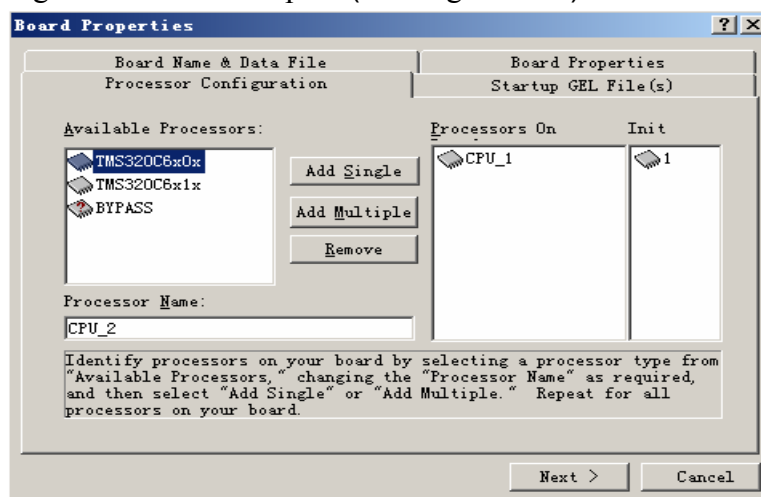
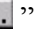


Figure C-5

8. Click on “Next” will bring you to the “Startup GEL File(s) page (Figure C-6). Click on the “” button to see a list of gel files.

Choose the gel file that matches your target board. Click on “Finish”. (For some target board, if you don’t choose a gel file, it may cause error while loading program to CCS.)

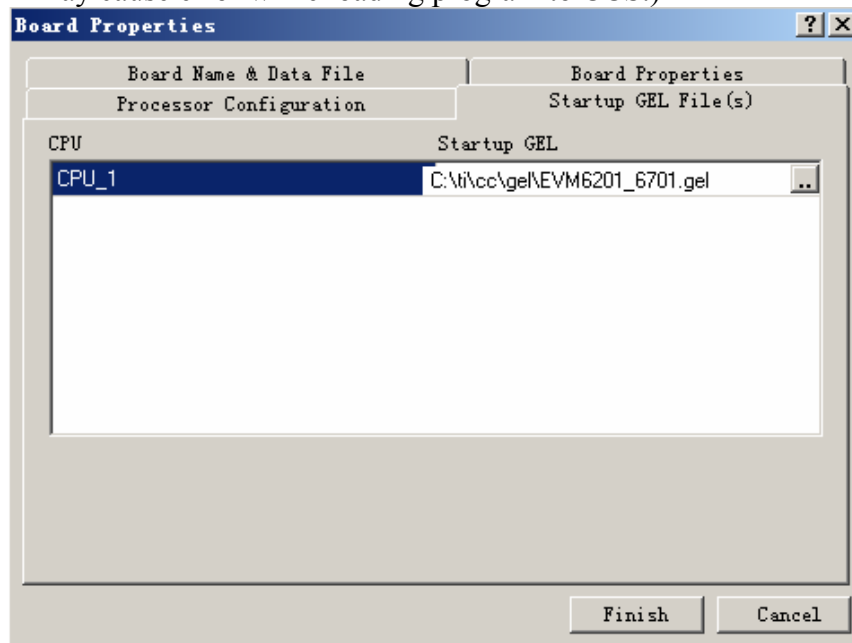


Figure C-6

9. Repeat the previous steps to add additional processors to your system.
10. To save the configuration and exit the “Code Composer Studio Setup” window, click on “File” and then “Exit”.

Hardware Considerations

Wintech TDS510USB JTAG Emulator is an electronic device that directly connects your computer to your target DSP system, therefore it is very important to follow established procedures in the safe handling of electronic devices. Please be advised that basic precautions regarding static electrical discharge and other electrical safety precautions should be followed when connecting or disconnecting the Wintech TDS510USB JTAG Emulator to and from the target DSP system or any time electronic devices are handled. Please consult with a technician if you are not sure of these procedures..

Recommended Connection Procedure

- 1. Remove power from the target DSP system.**
- 2. Remove USB cable connection from the TDS510USB 2.0 JTAG Emulator.**
- 3. Make sure you are grounded and have eliminated all potentials for static electrical discharge.**
- 4. Connect the Wintech TDS510USB 2.0 JTAG Emulator to the target system by using the keyed JTAG ribbon cable that is supplied with the unit. Be sure to check cable orientation.**
- 5. Apply power to the target DSP system.**
- 6. Connect the Wintech TDS510USB 2.0 JTAG Emulator to the host computer by using a USB cable.**

Recommend Disconnection Procedure

1. Remove USB cable connection from the Wintech TDS510USB2.0↔USB 2.0 JTAG Emulator.
2. Remove power from the target DSP system.
3. Make sure you are grounded and have eliminated all potentials for static electrical discharge.
4. Disconnect the keyed JTAG ribbon cable from the target DSP system.

JTAG Cable Connection

The Wintech TDS510USB JTAG Emulator supports all TI DSP devices with a JTAG interface.

IMPORTANT NOTE

It is very important to properly orient the connector on the DSP target system so that Pin 1 on the cable matches Pin 1 on the DSP target system. Connecting the cable incorrectly may cause damages on your DSP target system or the TDS510USB2.0 JTAG Emulator.

The JTAG interface flat cable comes with a keyed 2x7-socket connector that should match your target DSP system hardware connector.

TMS	1	2	TRST
TDI	3	4	GND
PD (V _{CC})	5	6	no pin (key)
TDO	7	8	GND
TCK_RET	9	10	GND
TCK	11	12	GND
EMU0	13	14	EMU1

Figure 23 – 14-Pin JTAG Header Signals

Signal	Description
TMS	Test mode select
TDI	Test data input
TDO	Test data output
TCK	Test Clock
TRST	Test Reset
EMU0	Emulation pin 0
EMU1	Emulation pin 1
PD(V _{CC})	Presence detect
TCK_RET	Test clock return
GND	Ground

Table 1 - JTAG Signal Descriptions

XDSRESET and XDSPROBE

Command line utilities supplied by Texas Instruments that are installed with Code Composer Studio.

XDSRESET

XDSRESET is a utility used to reset scan-controllers and scan-paths. This utility is also used to initialize scan-controllers and any related FPGA's using default (built-in) data. It also strobes the scan-path's JTAG TRST signal to initialize the JTAG Test Access Ports and JTAG emulation logic in target devices.

The necessary files required to run this utility are installed in \ti\cc\bin. Please execute the command below from a command line prompt. `C:\ti\cc\bin\xdsreset -h`

Syntax for using this command with the Wintech USB 2.0 JTAG Emulator is as follows:

```
xdsreset -p0x240 -f wtusb5102.cfg
```

XDSPROBE

XDSPROBE is a utility used to probe (test) scan-controllers and scan-paths. This utility can help you develop and test both the 510 and 560 class products and the scan controllers and scan paths connecting to the target systems.

The necessary files needed to run this utility are installed in \ti\cc\bin and please execute the command below from a command line prompt. `C:\ti\cc\bin\xdsprobe -h`

Syntax for using this command with the USB 2.0 JTAG Emulator is as follows:

```
C:\ti\cc\bin\xdsprobe -f wtusb5102.cfg -p 0x240 -y
```

Support Information

Wintech support is provided for pre-sales information and registered products only

Contact Information

Mailing Address

Wintech Digital System Technology Corp
24 Corporate Plaza, Suite 100, Newport Beach, CA 92660, USA

Phone

+1 949-760-0401

FAX

+1 949-203-2235

World Wide Web

<http://www.wintechdigital.com>

E-Mail

sales@wintechdigital.com
support@wintechdigital.com
info@wintechdigital.com

Corrections

Please report any documentation errors via email to support@wintechdigital.com.